



18 Cuttaburra Crescent Glenvale QLD

4  2  2 

Situated in the popular "Outlook Estate" in thriving Glenvale, Number 18 sits on the high side of the street on a 595m² block and represents the quintessential 4-beds/2-bath/2-car, low-maintenance family home - does easy, care-free living/investing sound good?

Features include 4 good-sized bedrooms with built-ins and ceiling fans, a master with ensuite and walk-in robe and a large open-plan tiled living/dining space (the real heart of the home) with reverse-cycle air conditioner for year-round comfort.

Add to this, a modern kitchen with dishwasher and electric appliances; and a light and airy family bathroom with shower and bathtub.

[For full version visit the website](https://www.therealestatepeople.com.au/8137939)

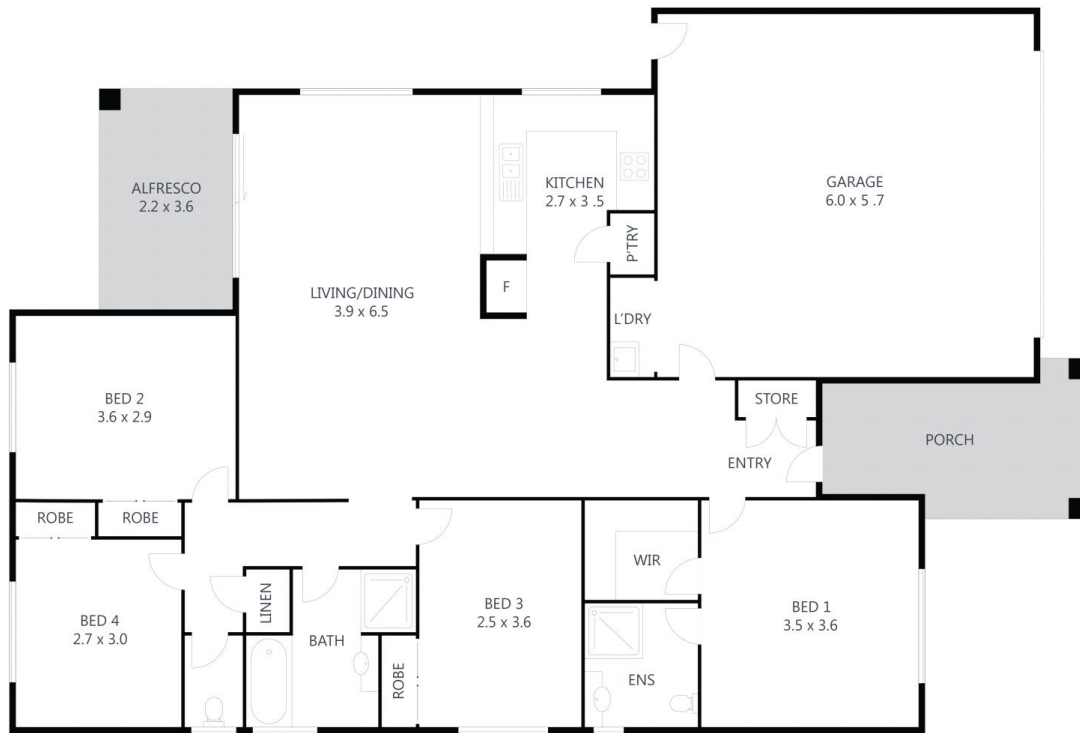
Type : House
Price : Offers Over \$569,000
Land Size : 595 sqm
View : <https://www.therealestatepeople.com.au/8137939>



Andrew Smith
07 4633 8899



Rach Hinz
07 4633 8899



18 Cuttaburra Crescent, Glenvale

Every effort was made to ensure the accuracy of this floor plan. However, all measurements in this floor plan are approximate and should only be used for representational purposes. This floor plan was produced by **SK MEDIA**



INTERNAL:	148m ²
EXTERNAL:	15m ²
TOTAL:	163m ²

4	
2	
2	

