




#### 4/30 Gipps Drayton QLD

2  1  1 

Part of "Fleetwood Court" (a professionally managed complex of just seven units), Number 4 sits at the rear of the property offering loads of privacy and a good amount of outside space - NOT always easy to find!

The complex is well-presented and maintained; and is situated just a stroll from Ernest Peak Park and the Drayton Bowls Club (Rink 46). An added bonus is the shops and USQ aren't far either.

Inside, the unit immediately feels spacious, light and modern with features including a smart modern kitchen with dishwasher, a vast open-plan tiled living and dining area with reverse-cycle air conditioner, there are 2 large bedrooms with built-ins and ceiling fans, a large main

**Type** : Unit  
**Price** : Offers Over \$389,000  
**View** : <https://www.therealestatepeople.com.au/8129713>

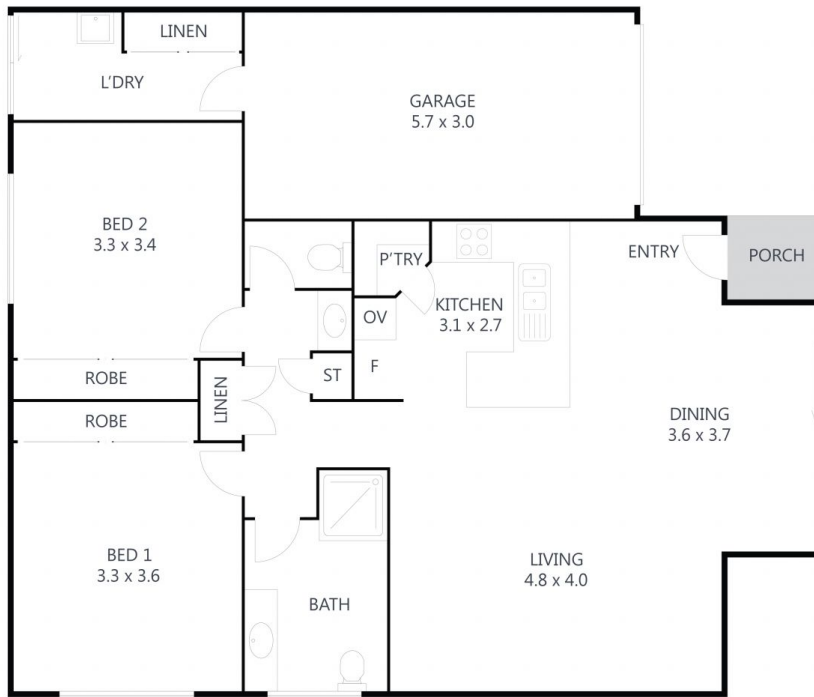


**Rach Hinz**  
07 4633 8899



**Andrew Smith**  
07 4633 8899

[For full version visit the website](https://www.therealestatepeople.com.au)



## 4/30 Gipps Street, Drayton

Every effort was made to ensure the accuracy of this floor plan. However, all measurements in this floor plan are approximate and should only be used for representational purposes. This floor plan was produced by **SK MEDIA**



INTERNAL:	102m <sup>2</sup>
EXTERNAL:	2m <sup>2</sup>
TOTAL:	104m <sup>2</sup>

2	
1	
1	

