






3 Large Street Middle Ridge QLD

4  2  2 

Architecturally designed by Barry Whisson - and built by a master builder (circa 1970s) - this gorgeous contemporary home exudes style and flair, endorsing the belief that great design really is timeless. Situated in a stunning range-side location in Middle Ridge, the home blends seamlessly into its beautiful surroundings like it has always been there. It truly 'belongs'.

The sale of 3 Large Street represents a unique opportunity for those looking for a home in a tightly held location that will never be 'run of the mill'. The clever floorplan has been designed to discretely separate the living areas from the sleeping zones, enhancing function and overall liveability.

The living area wing contains a well-appointed kitchen adjoining a northern meals area on one side and a spacious family room on the other. This wing also includes

Land Size : 4573 sqm

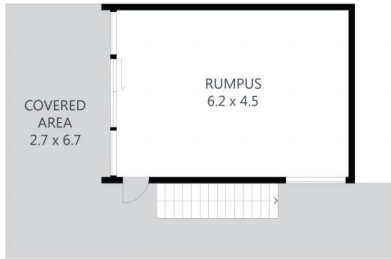
View : <https://www.therealestatepeople.com.au/8012958>



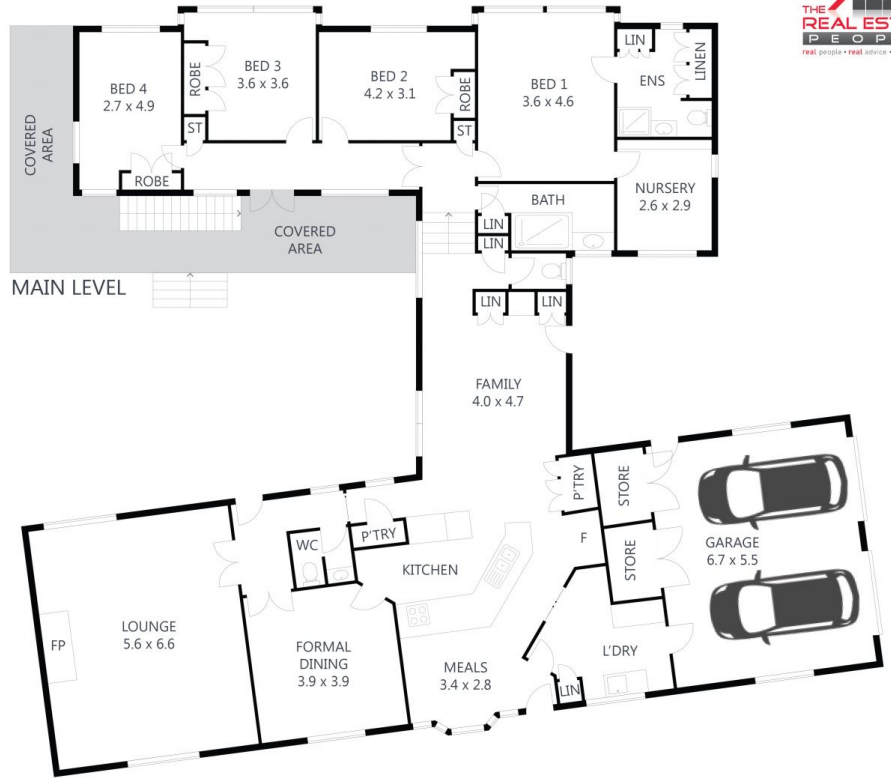
Rach Hinz
07 4633 8899



Andrew Smith
07 4633 8899



LOWER LEVEL



3 Large Street, Middle Ridge

4 3 2

Every effort was made to ensure the accuracy of this floor plan. However, all measurements in this floor plan are approximate and should only be used for representational purposes. This floor plan was produced by **SK MEDIA**

